



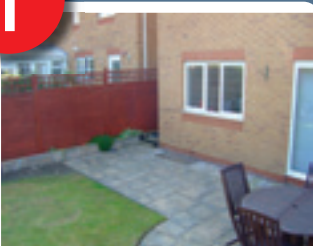
# DURABASE

Advanced Base and Wall Systems for Conservatories

## A Simple Solution For Conservatory Bases



1



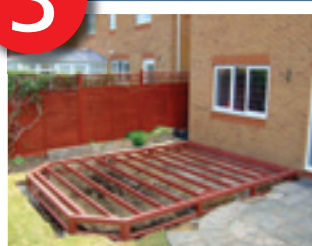
Choose the site for your conservatory. Durabase can be sited anywhere, even on a sloping site.

2



Install the concrete pads as per the pad plan supplied. Note the lack of mess and disruption!

3



Lay down the steel base and level using the adjustable legs then fix to the house wall.

4



Attach brick skirt and modular wall to steel base and finish by fixing the bridging tiles in place.

## The Simple Solution for Conservatory Bases

**What is Durabase?** The Durabase System is a proven solution for conservatory bases – no mess, no hassle and only taking a fraction of the time to install – are just a few of its benefits. The Durabase System comprises of a bespoke steel base and modular wall, made to your exact specifications, thus ensuring it is a perfect fit for your conservatory – every time!

**Why Durabase?** Durabase alleviates much of the hard work and most of the problems associated with the old style conservatory base construction, but still provides a safe, strong and firm foundation for your conservatory. Durabase arrives in kit form and is suitable for both professional and DIY construction. The only foundations required are a number of concrete pads placed at strategic points around the base. This means far less excavation work and waste material to dispose of compared to other methods of base construction. The Durabase System is also very quick to install. An average base and wall can be installed in less than two days!



### Brick Finish

Durabase modular walls are faced with real brick tiles and mortar. We have a wide range of finishes that will help match your existing house brick.

### No need to move manhole or drains



Manholes need not present an expensive obstruction. The base will naturally span the drain and access can be gained via a trap-door and removable floor joist, built in during fabrication.

## DURABASE

### 1. OUTER LAYER 3 PARTS

**A.** Brick Slip **B.** High Density Insulation Board **C.** Structural Ply Backing Panel

**2. HOLLOW FRAME** Holes are pre-cut to provide access for wiring and plumbing.

### 3. FRAME

Galvanised steel frame provides a strong, lightweight construction.

### 4. FLOORING

18mm moisture resistant chipboard flooring system.

### 5. ADJUSTABLE LEGS

Screw mechanism to give maximum adjustable levels.

### 6. UNDER FLOOR

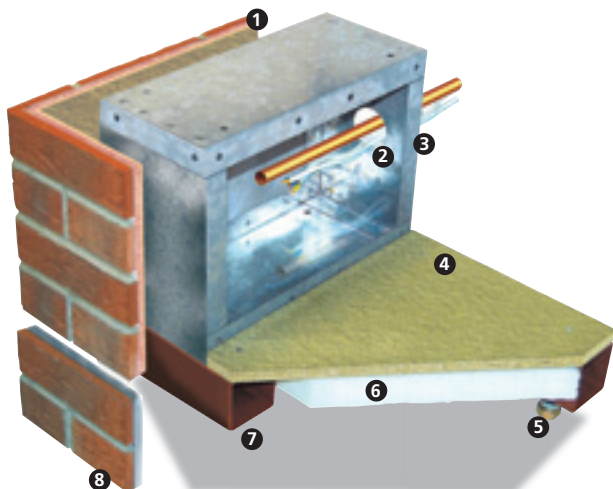
50mm under floor insulation.

### 7. BASE FRAME

Heavy duty steel frame.

### 8. BASE SKIRT

Brick slip on cement partial board.



### U-Values

The following U-Values can be obtained using the Durabase System:

Walls -  $0.27W/m^2k$  Floors -  $0.22W/m^2k$ \*

\* Wall cavity must be insulated and foil backed plasterboard used.

# Durabaseplus floor system

## The Benefits

**Quicker....** The Durabase arrives in kit form, complete with flooring and underfloor insulation ready for a quick and easy assembly. The average base can be installed within a day!

**Easier....** Uneven or sloping sites and difficult site access are easily overcome with Durabase.

**Cleaner....** There's no need for large scale excavations, which minimises the amount of soil to dispose of and the disruption caused to the site.

**Cost Effective....** No need for expensive relocating of manholes or drains.

**Straightforward Installation....** Durabase is suitable for either professional or DIY installation. Durabase can be assembled with just a little DIY experience. No specialist tradesman or brick layers are required. The Modular walls are bricked and mortared before they are delivered to site.

**U-Values....** The following U-values of can now be achieved:  
Walls -  $0.27W/m^2k$  and Floors -  $0.22W/m^2k$ .



# DURABASE

Advanced Base and Wall Systems for Conservatories